

SUBMITTAL: FD, FDSS & HGFD SERIES - FIRE RATED FLUSH ACCESS DOORS

JL Industries' innovative line of fire-rated access panels for every type of installation meets testing standards: UBC 43-7, UL10B, ASTM E152. Access panels are rated to 1-1/2 hours for vertical surfaces and 1 hour combustible/3 hour non-combustible horizontal surfaces. All models feature a 2" thick insulated door and spring-assisted closer. A second spring is included on sizes 16" x 16" thru 24" x 36" and must be used for the ceiling fire-rating on these sizes. Panels packaged individually.



Inside of Wall Model

FD: Standard Panel (Wall or Ceiling):

Frame & Trim: 16 gauge steel with a paintable 1" flange.
Door: 2" thick, insulated 20 gauge steel with continuous hinge.
Finish: Gray powder coat primer.
Lock: Universal turn ring and key lock. (U)

FDSS: Stainless Steel (Wall or Ceiling):

Frame: 16 gauge stainless steel with 1" wall flange.
Door: 2" thick, insulated 20 gauge stainless steel with continuous hinge.
Finish: 304 Stainless steel - #4 Satin finish.
Lock: Universal turn ring and key lock. (U)

HGFD: Heavy Gauge and Security (Wall):

Frame: 14 gauge steel with paintable 1" wall flange.
Door: 2" thick, insulated 14 gauge steel with continuous hinge.
Finish: Gray powder coat primer.
Lock: Universal turn ring and key lock. (U)



See Drawings on Page 2 for Dimensions



Options at Additional Cost:

- (G) Galvanized Steel Door & Frame
- (UM) Mortise slam lock prep for lock by others. This preparation will accept any standard 1-1/8" dia. mortise cylinder and allows you to key to new or existing master key system. Cam must have minimum "x" length of 7/16"
- (UMI) Mortise slam lock installed.
- Special Sizes Available from 6"x 6" to 48"x 48" (maximum sizes for ceiling may be smaller).
- Optional colors - see selection in catalog or website, custom colors-submit paint chip. W-White, R-Red, BK-Black, FBK-Flat Black, S-Sand, AB-AMS Beige, SB-SC Flat Beige, B-Bronze, SA-Satin Aluminum

Fire-Rating of FD, FDSS & HGFD:

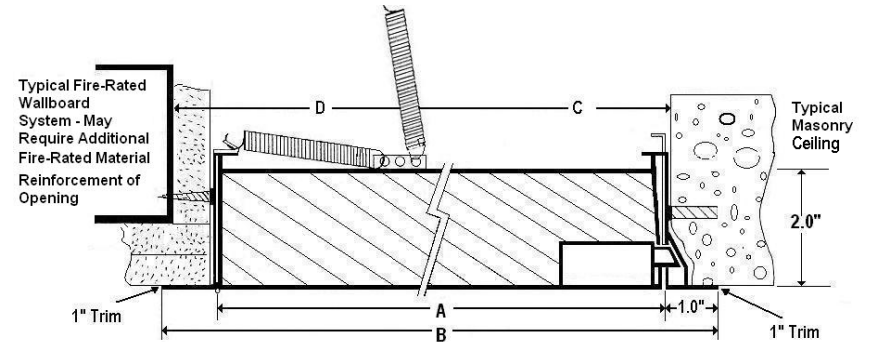
Wall Installation: 1-1/2 hour UL "B" label in a 2 hour fire barrier. Test # R13067-1
Ceiling Installation: Warnock Hersey listed for floor or ceiling installations with 3 hour non-combustible rating or 1 hour combustible rating. Test # WHI-495-PSH-0163
CSFM: This product has been approved by the California State Fire Marshall (CSFM) pursuant to Section 13144.1 of the California Health and Safety Code. See CSFM Listing No 3330-1223:101 for allowable values and/or conditions for use concerning material presented in this document. It is subject reexamination, revision and possible cancellation.

Order Format: _____ - _____ - _____ **Example: FD-1212UMI-B**
 Model Width Height Lock (U Standard, UM Optional & UMI Optional) Color

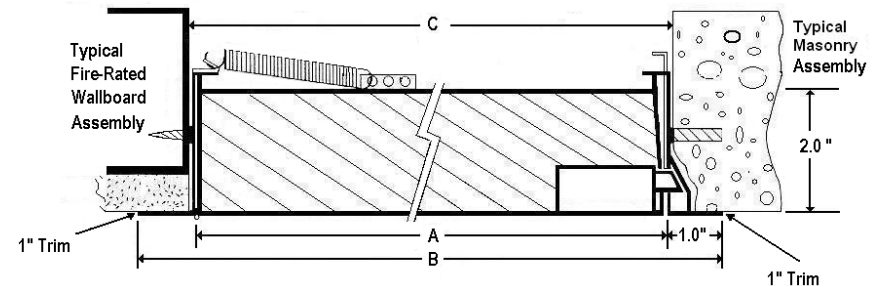
 JL INDUSTRIES	 www.activarcpg.com	Distributor:	Quantity:
		Contractor:	Approved By:
		Model #:	Architect:
		Project:	Date:
HEADQUARTERS & CUSTOMER SERVICE: 4450 WEST 78 TH ST CIRCLE, BLOOMINGTON, MN 55435-5416 PH: 800-554-6077 FAX: 952-835-2218 EMAIL: SALES@JLINDUSTRIES.COM WWW.ACTIVARCPG.COM ACPG SOUTHEAST (THOMAS ENTERPRISES): FT MYERS, FL ACPG WEST COAST (SAMSON): COMMERCE, CA WAREHOUSES: DALLAS TX, LANCASTER PA, ATLANTA GA, CHICAGO, IL, Seattle WA 1-26-2011			

QTY	A		B		C		D		APPROXIMATE SHIPPING WEIGHT In Pounds			LATCH (ES)
	MODEL SIZE		OUTSIDE FRAME DIMENSIONS		1 1/2 Hour UL "B" Rated Wall		3 Hour Non Combustible Ceiling Rating (Allowance for Fire Rated Liner of Opening)		FD	FDSS	HGFD	
					1 Hour Combustible Ceiling Rating							
	WIDTH X HEIGHT		W	H	WIDTH	HEIGHT	WIDTH	HEIGHT				
	8" X 8"	10"	10"	8 3/8"	8 3/8"	9 5/8"	9 5/8"	6	6	11	1	
	10" X 10"	12"	12"	10 3/8"	10 3/8"	11 5/8"	11 5/8"	8	8	15	1	
	12" X 12"	14"	14"	12 3/8"	12 3/8"	13 5/8"	13 5/8"	10	10	17	1	
	14" X 14"	16"	16"	14 3/8"	14 3/8"	15 5/8"	15 5/8"	12	12	22	1	
	16" X 16"	18"	18"	16 3/8"	16 3/8"	17 5/8"	17 5/8"	15	15	17	1	
	18" X 18"	20"	20"	18 3/8"	18 3/8"	19 5/8"	19 5/8"	17	18	30	1	
	20" x 20"	22"	22"	20 3/8"	20 3/8"	21 5/8"	21 5/8"	21	22	51	1	
	20" x 30"	22"	32"	20 3/8"	30 3/8"	21 5/8"	31 5/8"	28	29	53	1	
	22" x 22"	24"	24"	22 3/8"	22 3/8"	23 5/8"	23 5/8"	26	27	51	1	
	22" X 30"	24"	32"	22 3/8"	30 3/8"	23 5/8"	31 5/8"	29	30	53	1	
	22" X 36"	24"	38"	22 3/8"	36 3/8"	23 5/8"	37 5/8"	36	37	58	2	
	24" X 24"	26"	26"	24 3/8"	24 3/8"	25 5/8"	25 5/8"	27	28	47	1	
	24" X 36"	26"	38"	24 3/8"	36 3/8"	25 5/8"	37 5/8"	37	38	60	2	
	24" X 48**	26"	50"	24 3/8"	48 3/8"	-	-	54	56	85	2	
	30" X 30**	32"	32"	30 3/8"	30 3/8"	-	-	38	40	62	2	
	32" X 32**	34"	34"	32 3/8"	32 3/8"	-	-	43	41	81	2	
	36" X 36**	38"	38"	36 3/8"	36 3/8"	-	-	52	54	92	2	
	36" X 48**	38"	50"	36 3/8"	48 3/8"	-	-	61	64	114	2	
	24" x 30"		* Not Rated For Ceiling									

CEILING INSTALLATION (Side View)
 Use "C" Dimension for Stud to Stud or Masonry Installation Without Wallboard Liner
 Use "D" Dimension for 5/8" Wallboard Liner of Opening on 4 Sides



WALL INSTALLATION (Top View)
 1-1/2 HOUR UL "B" LABEL IN A 2 HOUR FIRE BARRIER
 Use "C" Dimension for Installation Without Wallboard Liner
 Add 1-5/8" to "A" for 5/8" Wallboard Liner of Opening on 4 Sides



JL INDUSTRIES

ACTIVAR
INC.

www.activarcpg.com

Construction Products Group

FD, FDSS & HGFD SERIES - FIRE RATED ACCESS DOORS

HEADQUARTERS & CUSTOMER SERVICE: 4450 WEST 78TH ST CIRCLE, BLOOMINGTON, MN 55435-5416 PH: 800-554-6077 FAX: 952-835-2218 EMAIL: SALES@JLINDUSTRIES.COM WWW.ACTIVARCPG.COM
 ACPG SOUTHEAST (THOMAS ENTERPRISES): FT MYERS, FL ACPG WEST COAST (SAMSON): COMMERCE, CA WAREHOUSES: DALLAS TX, LANCASTER PA, ATLANTA GA, CHICAGO IL, SEATTLE WA 1-2-11