

SUBMITTAL: MODEL TM FLUSH ACCESS PANELS

Qty	A Model Size	B Outside Frame Dimensions		C Wall Opening Dimensions		Approx. Ship Wt. in lbs	Latch(es)
	Width X Ht	Width	Height	Width	Height		
-	6" x 6"	8"	8"	6 3/8"	6 3/8"	4	1
-	8" x 8"	10"	10"	8 3/8"	8 3/8"	4	1
-	8" x 12"	10"	14"	8 3/8"	2 3/8"	6	1
-	10" x 10"	12"	12"	10 3/8"	10 3/8"	6	1
-	12" x 12"	14"	14"	12 3/8"	12 3/8"	7	1
-	12" x 16"	14"	18"	12 3/8"	16 3/8"	9	1
-	12" x 18"	14"	20"	12 3/8"	18 3/8"	10	1
-	12" x 24"	14"	26"	12 3/8"	24 3/8"	12	2
-	14" x 14"	16"	16"	14 3/8"	14 3/8"	9	1
-	16" x 16"	18"	18"	16 3/8"	16 3/8"	11	1
-	16" x 20"	18"	22"	16 3/8"	20 3/8"	13	2
-	18" x 18"	20"	20"	18 3/8"	18 3/8"	12	1
-	20" x 24"	22"	26"	20 3/8"	24 3/8"	15	2
-	20" x 30"	22"	32"	20 3/8"	30 3/8"	20	4
-	22" x 22"	24"	24"	22 3/8"	22 3/8"	17	7
-	22" x 30"	24"	32"	22 3/8"	30 3/8"	22	4
-	22" x 36"	24"	38"	22 3/8"	36 3/8"	24	5
-	24" x 24"	26"	26"	24 3/8"	24 3/8"	18	4
-	24" x 30"	26"	32"	24 3/8"	30 3/8"	22	5
-	24" x 36"	26"	38"	24 3/8"	36 3/8"	25	5
-	30" x 30"	32"	32"	30 3/8"	30 3/8"	30	5
-	36" x 36"	38"	38"	36 3/8"	36 3/8"	41	5
-	36" x 48"	38"	50"	36 3/8"	48 3/8"	51	6

Model TM for Masonry, Tile and Wallboard is an all purpose 16 gauge steel access door affords fast and convenient access for inspection or service to vital components of plumbing, heating, air conditioning and/or electrical systems. The exposed 1" frame flange adds rigidity and conceals rough wall openings. The concealed hinged door is mounted to the frame and swings open for ease in servicing and results in a door always closing square in place. Nails, bolts or masonry anchors may be used to fasten the TM model securely in place.

SPECIFICATIONS

Frame: 16 gauge steel with 1" wall flange. 1-5/8" depth.

Door: 16 gauge steel mounted with 90° continuous, concealed hinge.

Finish: Gray powder coat primer.

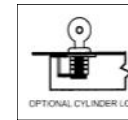
Lock: Flush screwdriver-operated steel cam - C.



View Window



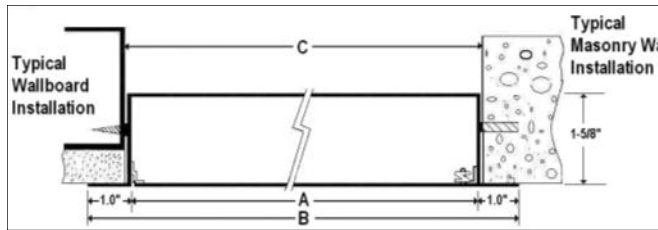
Louvered Vents



OPTIONAL CYLINDER LOCK

Order Format Example: TM-2424C W


TM - Width Height Lock (C Std or Option Code) Special Finish



OPTIONAL FEATURES AT ADDITIONAL COST:

- 14 Gauge Construction
- Double door
- Louvered vents
- Plexiglass view window
- (TMG) Galvanized finish
- Rain Hood
- Gasketing
- (RD) Removable Door (no hinges)
- Optional colors - see catalog or website
- W**-White, **R**-Red, **BK**-Black, **S**-sand
- FBK**-Flat Black, **AB**-AMS Beige, **B**-Bronze
- SB**-SC Flat Beige, **SA** - Satin Aluminum
- Custom colors - submit paint chip.
- (L) Cylinder lock installed
- (MP) Mortise cam lock prep
- (MPI) Mortise cam lock installed
- (UM) Mortise slam lock prep
- (UMI) Mortise slam lock installed
- (LL) Mortise deadbolt prep
- (LLI) Mortise deadbolt installed
- (KK) Knob cam
- (CT) Torx head cam
- (CA) Hex head cam
- (SHC) Spanner head cam

22 Models in bold above are stocked in one or more of our warehouse & manufacturing locations. See the Quick Ship Listing. We specialize in producing panels with custom sizes and features. Contact Customer Service with your requirements.

 ACTIVAR INC. <small>www.activarcpg.com</small> Construction Products Group	Distributor:	Quantity:
	Contractor:	Approved By:
	Model #:	Architect:
	Project:	Date:
HEADQUARTERS:4450 WEST 78 TH ST CIRCLE, BLOOMINGTON, MN 55435-5416 PH: 800-554-6077 FAX: 952-835-2218 EMAIL: JL@JLINDUSTRIES.COM WWW.ACTIVARCPG.COM ACPG SOUTHEAST (THOMAS ENTERPRISES):FT MYERS, FL ACPG WEST COAST (SAMSON): COMMERCE, CA WAREHOUSES: DALLAS TX, LANCASTER PA, ATLANTA GA, CHICAGO, IL, Seattle WA 5/18/11		